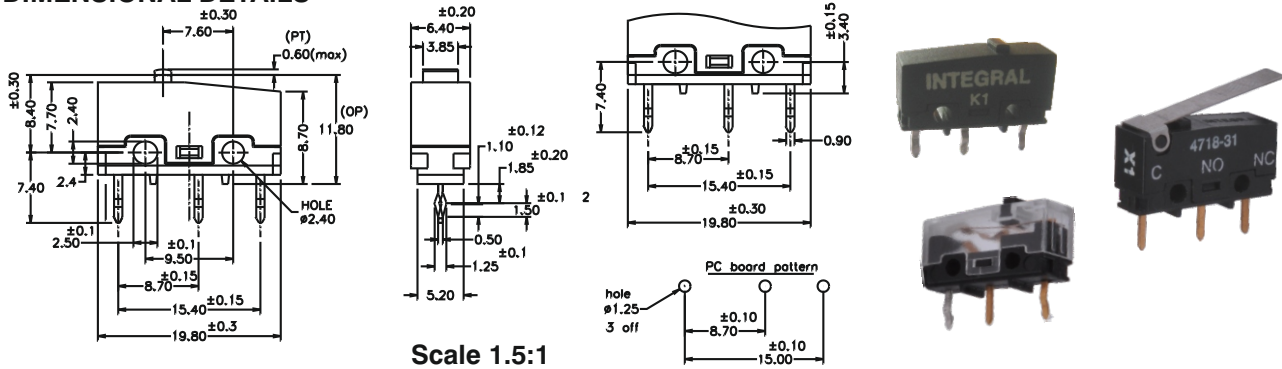


**Series 47**

**DESCRIPTION**

**Integral Series 47 Micro Switch** is a snap acting single pole change over switch actuated by plunger. It is a sensitive type switch intended for use in AC and DC applications, suitable for industrial and Commercial Equipment, Communication Equipment, Vending Machines, Security Systems, Data Systems, Medical Equipment, Cassette Recorders, VCR's etc. The switch is ideal due to its small size, lowg operating force and high reliability.

**DIMENSIONAL DETAILS**



Scale 1.5:1

**SPECIFICATIONS**

- CONTACT CONFIGURATION : Single pole change over (Snap acting type)
- CONTACT RATING : with  $80 \pm 20$  gms, Operating force, 2 Amps (Resistive Load) at 250 V AC
- CONTACT RESISTANCE : initial 50 milli ohms maximum
- ELECTRICAL LIFE : 500,000 at 20 CPM at 28V 10 mA
- INSULATION RESISTANCE : Mimimum 100Meg ohms at 500 V DC
- DIELECTRIC STRENGTH : 1000 VRMS
- PRE TRAVEL : 0.60mm maximum
- OVER TRAVEL : 0.4 mm maximum

**MATERIALS & FINISHES**

- BODY & COVER : 30% Glass filled PBT UL 94 V.O
- PLUNGER : Nylon 6/6 (Block)
- CONTACT PINS : See below under contact selection
- TERMINALS : Copper Alloy Silver plated
- CONTACT BRIDGE : Beryllium Copper

**CONTACT SELECTION ORDER CODE**

- 0** Contacts & all Terminals: Copper alloy silver plated  
Rating : 0.1 Amps at 250 V AC (Resistive)
- 1** Contacts : Coin Silver  
Terminals : Copper alloy silver plated  
Rating : 2 Amps at 250 V AC (Resistive) or 28 VDC
- 2** Contact & Terminals : Copper alloy Gold Plated  
Rating : 0.4 VA max @ 20 V AC or DC (Resistive)
- 3** Contacts : Coin silver with Gold plate over Nickel  
Terminals : Copper alloy with Gold plate over Nickel plate  
Rating : 0.4 VA max at 20 V AC or DC max (Resistive) or 2 Amps at 250 V AC or 28 V DC.

**TERMINATION**

- Order Code**
- 2** - Solder Type
  - 3** - PC Straight (Self Standing)

**ACTUATOR \***

- 0** - Pin Plunger (std)
- 1** - Short hinge lever - 20.0
- 2** - Long hinge Lever - 24.3
- 3** - Roller lever - 17.40
- 4** - Simulated lever

ORDERING CODE



\* : Note: Levers as per customer requirements.

All Dimensions in mm.

10/2011 ISSUE 03, DCR 1182