

ROTARY SWITCHES



Series 45

DESCRIPTION

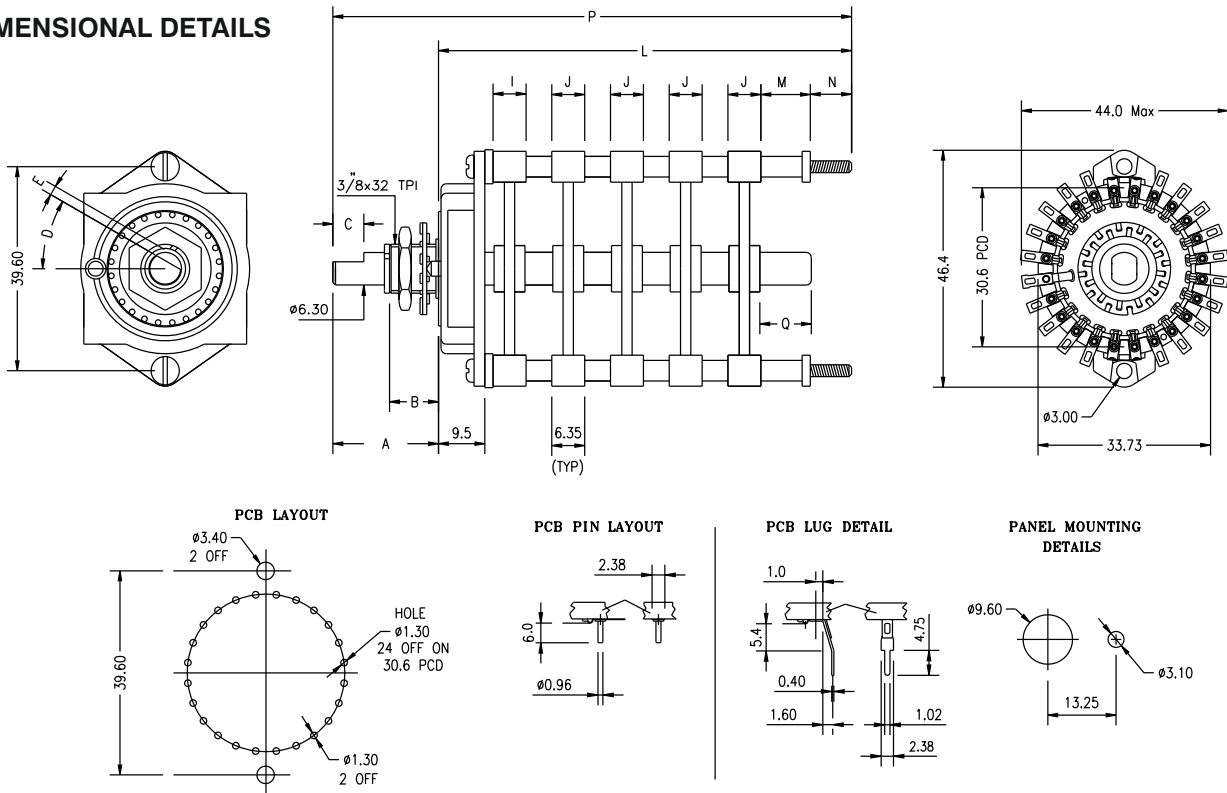
Integral Series 45 Professional Grade Rotary Switches are ideally suited for use in Industrial and Laboratory equipments. Double wiping self cleaning contacts and choice of excellent dielectric materials and suitable plating finishes result in long term reliability and consistent quality. An almost infinite variety of switching configuration meet most of the design requirements of the user. Assembly options are possible with the use of spacer / shields etc. and permit custom built switches. 'O' ring sealing is available for both spindle and panel mounting bush. The balanced pressure indexing mechanism provided by 2 balls housed in a engineering thermoplastic housing provides smooth positive action with consistent and repeatable torque.



FEATURES

- Double wiping self cleaning contacts
- Choice of 15° or 30° or 22.5° index angle
- Make before Break, Break before Make or special rotor segments
- Insulated shafts for RF circuits
- Hollow shafts for operating a pot meter mounted at the rear of the switch
- Rigid or Flexible Tag PCB terminals (for single wafer only)
- Spaces between wafers will facilitate component mounting on the switch itself
- Shields between wafers as per customers requirements
- Gold plating on clips/rotors available
- Max 28 clips can be mounted on a single wafer

DIMENSIONAL DETAILS



All Dimensions in mm.

SPECIFICATIONS

CONTACT RATING
CURRENT CARRYING : 2 amps (non-switching)

CURRENT BREAKING : 0.5 amps @ 28 V DC
0.25 amps @ 110 V AC

WORKING VOLTAGE : 230 V AC (max)

INSULATION RESISTANCE : >1000 Megohms (between any two insulated parts)

VOLTAGE PROOF : min. 500 V AC

CONTACT RESISTANCE : 15 milliohms (Initial - adjacent contacts) @ 2-4V DC

TEMPERATURE RANGE : -65°C to 85°C

LIFE : 25,000 operations

INDEX ANGLE : 15° or 30°

SEALING : Panel & Shaft Seal on request

MATERIALS & FINISHES

CONTACT CLIPS : Spring hard Brass heavily Silver plated / Silver alloy / Gold plated

ROTOR BLADES : Brass heavily Silver plated / Gold Plated

STATOR & ROTOR : Moulded glass fibre loaded Diallyl Phthalate / Nylon / Polycarbonate

INDEX MECHANISM : Index springs - Stainless Steel Zn plated
Base - Engineering Plastic

SWITCHING POSITIONS PER SECTION

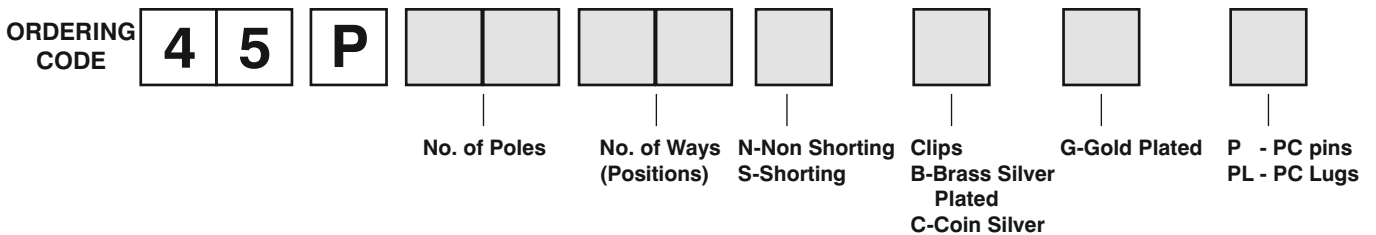
	15° throw Positions	30° throw Positions	22.5° throw Positions
1 pole	2 to 24	2 to 12	2 to 6
2 pole	2 to 11	2 to 6	
3 pole	2 to 7	2 to 3	
4 pole	2 to 5	2 to 2	

CHECK LIST FOR ORDERING : Given below are the variations possible in the Switch. Please take care of these points if you are ordering a custom-built switch. For contact configuration, other than standard, use the layout sheet available on request.

- A - Shaft length - 19.5 mm (dia 6.35 mm)
- B - Bushing thread length - 9.5 mm / Threads 3/8"x32TPI (Length 6.35 mm available on request)
- C - Flat length - Standard 6mm (in no case closer than 3 mm from end of bushing) Optional
- D - Angle of flat - Multiples of 15° ± 3° (specify position of flat with switch shaft in fully counter-clockwise position when viewed from front or knob end)
- E - Flat Dimension - 5.5 ± 0.1 mm
- I - First spacer -0.8 mm with standard clips (No spacer needed if no clip present)
- J - Spacer -3.0mm with standard clips facing each other (No spacer if no clips face each other)
- M - Standard 1.6mm min (Any length spacer may be inserted at this point)
- N - 0mm to 5.0mm to suit standard screw available
- L/P - Specify maximum overall length, if important
- Q - Shaft extension at rear nominal 2.0mm to 6.0mm (to suit standard shaft available)
- R - Index angle 15°, 30°, 22.5°
- S - Stopper - Yes/No
- T - Locating Lug - Yes/No
- U - Hollow shaft
- V - No. of Poles & Ways
- W - Contact Terminals - Solder type/PCB type
- X - Contact - Silver/Gold plating/Silver alloy
- Y - Shields (dimension/position)

HOW TO ORDER

1. For standard switch by describing as given below.
2. For special assembly use layout or send drawings.



KNOB FOR ROTARY SWITCHES



Series 90

DESCRIPTION

Integral Collet Knobs can be used for all types of Rotary Switches. They are sturdily built and are able to withstand repeated use. They are designed to meet the requirement of different shaft Dia.



Operation of knob, it is effective to rotate the pointer to give an indication of switch position.

KEY FEATURES OF KNOB :-

- * Simple construction with reliable operation.
- * Simplicity of use.
- * Styling

Knob is designed to have easy fit of accessories giving more versatility.

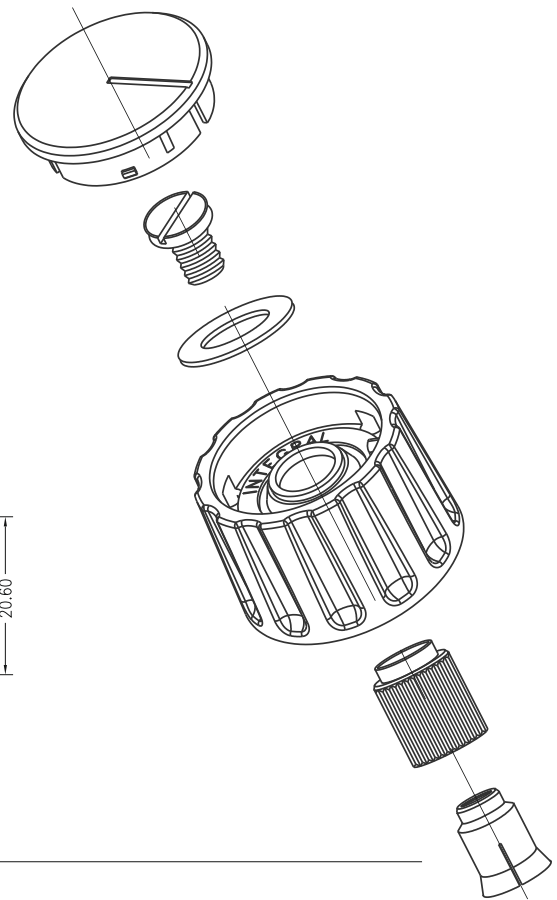
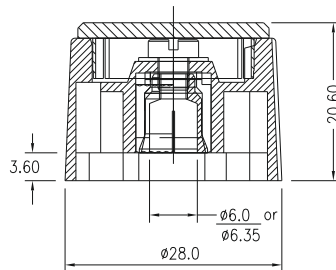
KNOB STYLE :- Standard

MATERIALS & FINISHES

MOULDINGS : Engineering Plastic (matt finish)

METAL : Brass, Nickel Plated.

DIMENSIONS OF KNOB



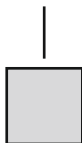
ORDERING CODE:-

COLOUR

- 0 - Light Grey
- 1 - Dark Grey
- 2 - Black

COLLET DIA

- 0 - 6.35 mm dia.
- 1 - 6.0 mm dia.



All Dimensions in mm.



INTEGRAL SYSTEMS AND COMPONENTS PRIVATE LIMITED

D-388/1, 1st Block, 1st Stage, Peenya Industrial Estate, Bangalore - 560 058, India

Telefax: (080) 2839 1707 / 2839 1708 / 2839 1709 / 2839 1710

An ISO 9001:2008 Company Website: www.integralsys.in E-mail: inty.systems@gmail.com / sales@integralsys.in