

# ROTARY SWITCHES - PCB TYPE

## Series 35

### DESCRIPTION

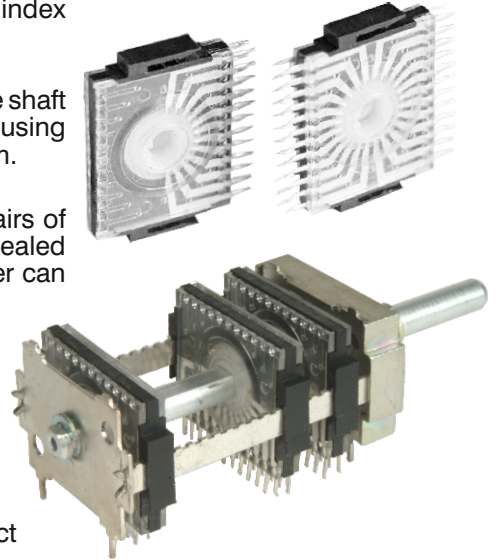
**Integral Series 35 Rotary Switch - PCB type** is designed to be used directly in PC Boards and switches 2 to 24 positions with 15° or 2-12 positions with 30° index angle.

It can be fixed in the PCB with the four soldering pins of the frame with only the shaft projecting from the panel. Alternately it can also be fixed on the front panel using the 3/8" x 32 TPI threaded bush and nut which is a part of the index mechanism.

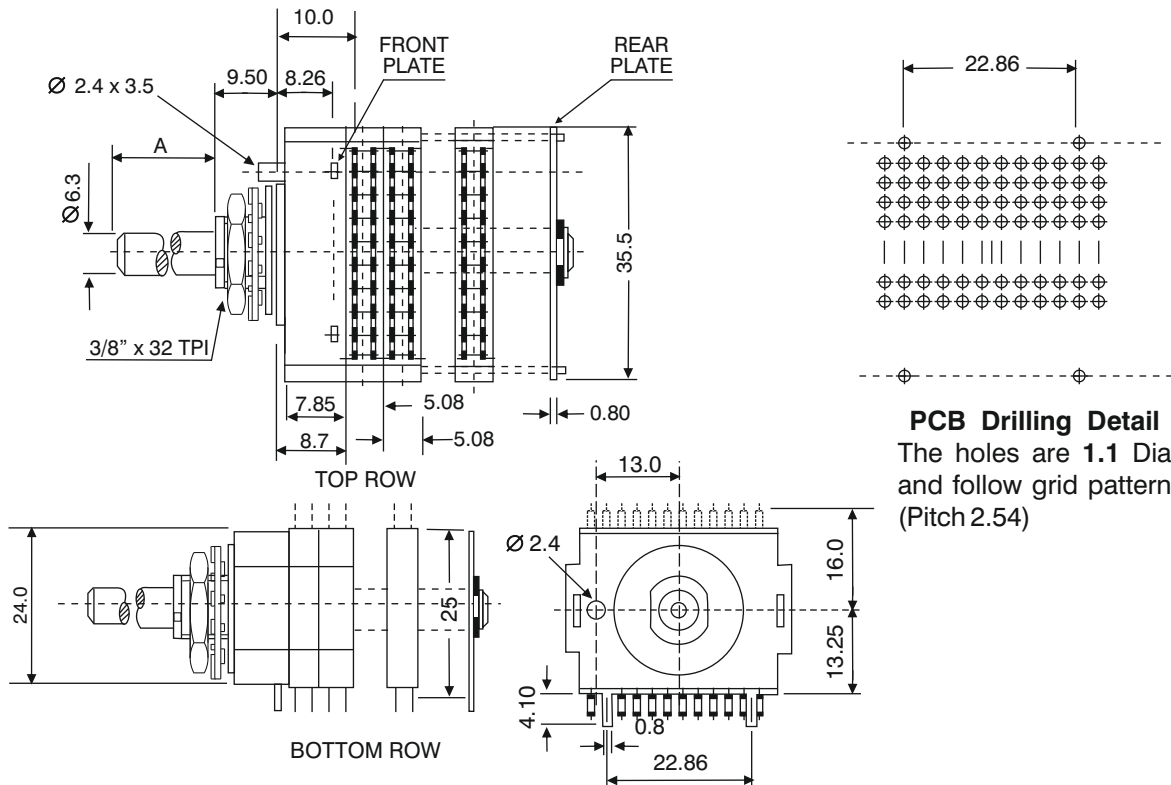
A maximum of ten dust proof switching modules with a maximum of 24 pairs of spring contacts can be mounted into a rigid frame. The soldering pins are sealed with epoxy resin or moulded so that during soldering no flux or other matter can enter the switching module.

### FEATURES

- Choice of 15°/30° index angle
- Spacing between terminals 1 grid (2.54 mm)
- Provides protection against dust & adverse environmental condition
- Epoxy sealing or moulding of terminals prevents flux flowing into contact
- Life time lubrication of contacts
- Gold plated moving contacts
- Easy replacement of modules without disturbing the entire assembly
- Max : 10 modules can be assembled in a single frame
- Max : 24 terminals per module



### DIMENSIONAL DETAILS



All Dimensions in mm.

**SPECIFICATIONS**

CONTACT RATING  
 CURRENT CARRYING : 1.5 A max  
 CURRENT BREAKING : 250 mA

WORKING VOLTAGE : 100 V AC max

SWITCHING POWER : 5 VA max

INSULATION RESISTANCE : >1000 Megohms at 500 VDC

VOLTAGE PROOF : min 1000 V AC

CONTACT RESISTANCE : <40 milliohms (Initial-adjacent contacts)

CAPACITANCE (CONTACT TO CONTACT) : 1 pF approx.

TEMPERATURE RANGE : -25°C to 70°C

LIFE : 25,000 cycles

INDEX ANGLE : 15° / 30°

**MATERIALS & FINISHES**

INSULATION : Polycarbonate & Acetal Engineering Plastics

FIXED CONTACT : Copper Alloy heavily Silver plated

MOVING CONTACT : Copper Alloy with Gold plate over Nickel plate

INDEX MECHANISM : Zamak Die Casting, Zn yellow plated and passivated.

SHAFT : Aluminium Alloy Rod / Tube (2.20 I.D.) as required

**NOTE :** If specified in order, the shafts are supplied with a 2.2mm (Dia) through hole to facilitate a 2.0 mm (Dia) shaft to operate potentiometer etc.

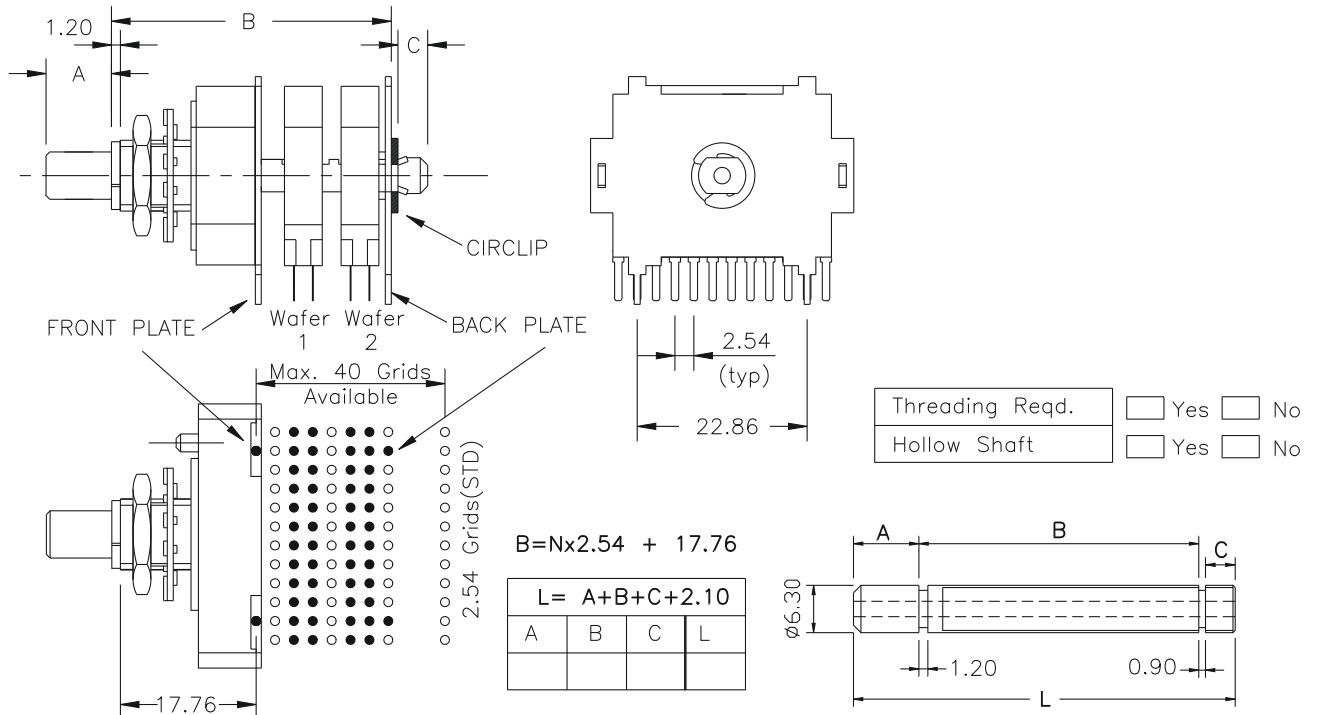
**SWITCHING CONFIGURATIONS PER MODULE (With bottom row of terminals only)**

15°	30°
1P 12W	1P 6W
2P 6W	2P 3W
3P 4W	
6P 2W	

**HOW TO ORDER**

1. A layout sheet is essential for each type of switch ordered.
2. For switch design details, refer to useful tips provided below.

**DRAWING OF ASSEMBLY INFORMATION REQUIRED, IN THE LAYOUT SHEET**



10/2011 ISSUE 03, DCR 1182

# KNOB FOR ROTARY SWITCHES



## Series 90

### DESCRIPTION

Integral Collet Knobs can be used for all types of Rotary Switches. They are sturdily built and are able to withstand repeated use. They are designed to meet the requirement of different shaft Dia.



Operation of knob, it is effective to rotate the pointer to give an indication of switch position.

### KEY FEATURES OF KNOB :-

- \* Simple construction with reliable operation.
- \* Simplicity of use.
- \* Styling

Knob is designed to have easy fit of accessories giving more versatility.

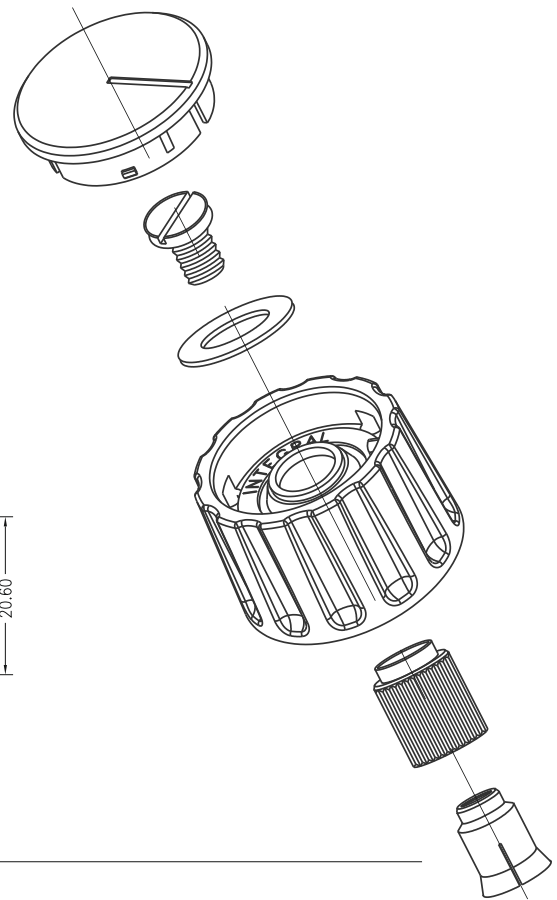
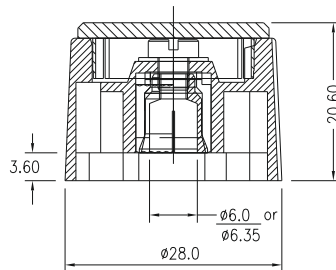
### KNOB STYLE :- Standard

#### MATERIALS & FINISHES

MOULDINGS : Engineering Plastic (matt finish)

METAL : Brass, Nickel Plated.

#### DIMENSIONS OF KNOB



#### ORDERING CODE:-

#### COLOUR

- 0 - Light Grey
- 1 - Dark Grey
- 2 - Black

#### COLLET DIA

- 0 - 6.35 mm dia.
- 1 - 6.0 mm dia.



All Dimensions in mm.



## INTEGRAL SYSTEMS AND COMPONENTS PRIVATE LIMITED

D-388/1, 1st Block, 1st Stage, Peenya Industrial Estate, Bangalore - 560 058, India

Telefax: (080) 2839 1707 / 2839 1708 / 2839 1709 / 2839 1710

An ISO 9001:2008 Company Website: www.integralsys.in E-mail: inty.systems@gmail.com / sales@integralsys.in