

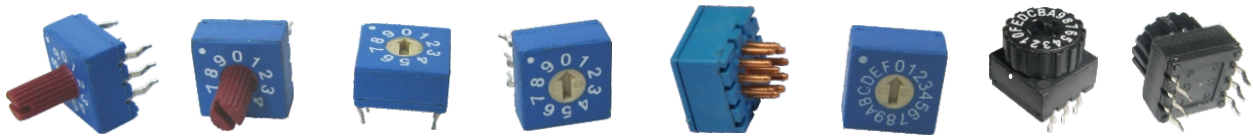
# ROTARY DIP SWITCHES



## Series - 89

### DESCRIPTION

- Moulded in terminals and sealed construction.
- Standard 2.54mm pin spacing
- UL-94V0 fire retardant plastics.
- Reliable contact and long term stability.
- Binary Decimal (10 positions) and Hexadecimal(16 position) real and complimentary codes available.
- Pin out compatible with most of current equivalents.



### SPECIFICATIONS

FUNCTION	: Break before Make
CONTACT RATING	: 150 mA 24 V Max
CONTACT RESISTANCE	: Below 80 milliohms initial
INSULATION RESISTANCE	: > 100 Megohms
DIELECTRIC STRENGTH	: 250 VAC(rms), 60 sec.
OPERATING TEMP	: -10 <sup>o</sup> C to 80 <sup>o</sup> C
STORAGE TEMPERATURE	: -25 <sup>o</sup> C to 85 <sup>o</sup> C
SOLDERING/ CONDITIONS	: Max.5 sec. +250 <sup>o</sup> c wave
LIFE EXPECTANCY	: 10,000 operations with load

### MATERIAL & FINISHES

HOUSING	: Thermoplastic
CONTACT BODY	: Thermoplastic
ACTUATOR	: Thermoplastic

### CONTACT MATERIALS

Fixed Contact	: Brass, Pltd., Ni, Tin plated.
Sliding Contact	: Brass, Pltd., Ni, Gold plated

### TRUTH TABLES :

Binary Code 1Pole, 10 Position Common (C) Connected to Terminals indicated.				
DIAL	1	2	4	8
0				
1	●			
2		●		
3	●	●		
4			●	
5	●			
6		●	●	
7	●	●	●	
8				●
9	●			●

Binary Code 1Pole, 16 Position Common (C) Connected to Terminals indicated.				
DIAL	1	2	4	8
0	0			
1	1	●		
2	2		●	
3	3	●	●	
4	4			●
5	5	●		
6	6		●	●
7	7	●	●	●
8	8			●
9	9	●		●
A	10		●	●
B	11	●	●	●
C	12		●	●
D	13	●		●
E	14		●	●
F	15	●	●	●

Binary Complement only 1 Pole, 10 Position Common (C) Connected to Terminals indicated.				
DIAL	1	2	4	8
0	●	●	●	●
1		●	●	●
2	●		●	●
3			●	●
4	●	●		●
5		●		●
6	●			●
7				●
8	●	●	●	
9		●	●	

Binary Complement only 1 Pole, 16 Position Common (C) Connected to Terminals indicated.				
DIAL	1	2	4	8
0	0	●	●	●
1	1	●	●	●
2	2	●	●	●
3	3		●	●
4	4	●		●
5	5		●	●
6	6	●		●
7	7			●
8	8	●	●	●
9	9	●	●	●
A	10	●	●	
B	11		●	
C	12	●	●	
D	13		●	
E	14	●		
F	15			

# ROTARY DIP SWITCHES



## DIMENSIONAL DETAILS :

### SHAFT TYPE

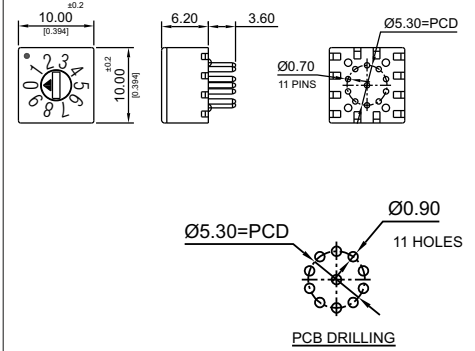
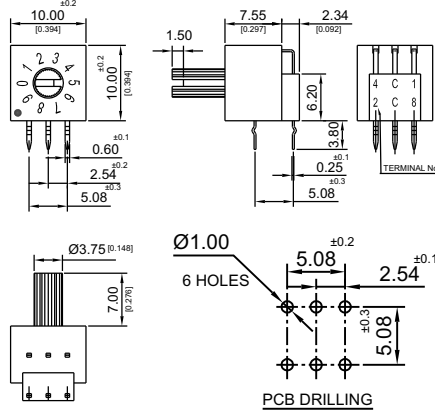
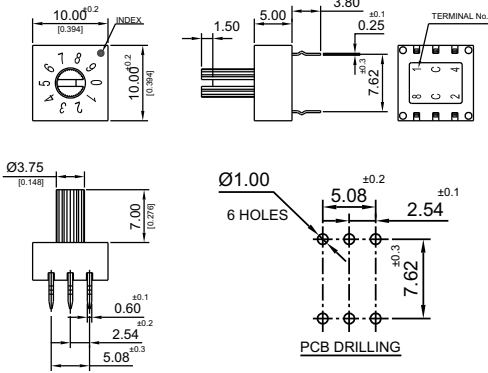
### STANDARD TYPE 10 position

### SHAFT TYPE

### RIGHT ANGLE TYPE 10 position

### FLAT TYPE

### PC STRAIGHT 10 position



### WHEEL TYPE

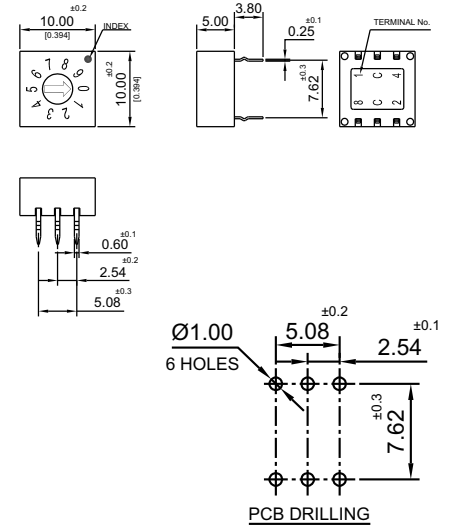
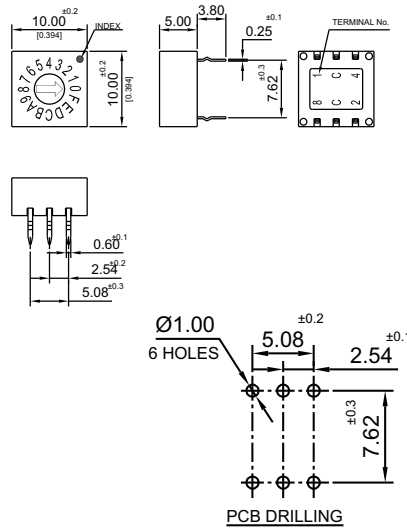
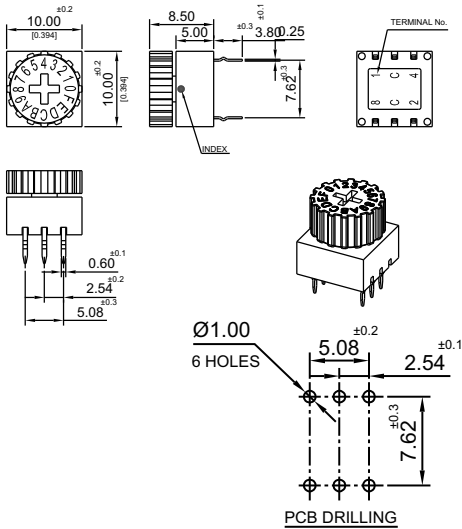
### STANDARD TYPE 16 position

### FLAT TYPE

### STANDARD TYPE 16 position

### FLAT TYPE

### STANDARD TYPE 10 position



## ORDERING INFORMATION:

Given below are the variations possible and corresponding Ordering Code

ORDERING CODE	<b>8</b>	<b>9</b>				
	<b>ROTOR</b>		<b>No. OF POSITION</b>		<b>OUTPUT</b>	
	ORDER CODE		ORDER CODE		ORDER CODE	
	1 - Flat type		10 - Position		R - Real - BCD	
	2 - Shaft type		16 - Position		C - Complementary -BCD	
	3 - Wheel type				TERMINAL	
					ORDER CODE	
					2 - PC Straight	
					3 - Standard	
					5 - Right angle	

10/2011 ISSUE 03, DCR 1182

All Dimensions in mm.



**INTEGRAL SYSTEMS AND COMPONENTS PRIVATE LIMITED**

D-388/1, 1st Block, 1st Stage, Peenya Industrial Estate, Bangalore - 560 058, India

Telefax: (080) 2839 1707 / 2839 1708 / 2839 1709 / 2839 1710

Website: www.integralsys.in E-mail: inty.systems@gmail.com / sales@integralsys.in